



AP SALEROOM

INAUGURAL PETROLIANA AUCTION
NOVEMBER 8TH 2025





Lot 138



Specialist Auction Dedicated To Vintage Advertising & Petroliana

Petroliana:

Auction day: Saturday 8th November 10am – 5pm

Viewing: Friday 7th November 1pm – 7pm

Venue:

BARC Clubhouse & Hospitality centre, Thruxton Racing Circuit SP11 8PN

What3words: ///undertone.mute.songbook



Catalogues £5 (£8 posted)

Additional Information:

Further information including condition reports, additional photos, and guide prices can be viewed on apsaleroom.com & thesaleroom.com

AP saleroom: trading name of The Advertising and Petroliana Saleroom Ltd

Tel: 07415 191 494 Email: info@apsaleroom.com



Lot 52

Buyer Terms & Conditions

The objective of AP saleroom is to create a fair and equitable auction facility that connects sellers and collectors through a forum that offers a high quality and varied mix of items in a welcoming environment. The motivation for this company comes from years of collecting historical advertising and petroliana. The company is operated by long term collectors offering a specialist, highly principled auction house at the most competitive commission rates possible.

OUR AIM IS TO MAKE EVERYONE A WINNER.

AP saleroom acts as auctioneers for the sellers, and whilst every effort is made to accurately detail lots for sale in conjunction with the sellers, we strongly advise personal inspection of any items that you wish to bid on in the auction. Condition, repairs and originality are best determined by personal viewing although we provide extensive high-quality photographs on our website. Additional details can be requested by e-mail or telephone but the final decision to bid and buy is the responsibility of the bidder. Our descriptions are provided as statements of our opinion only and cannot offer a warranty or guarantee. Your visit to personally inspect items is our recommendation and we will make you most welcome.

We try to keep our fees for buyers as competitive as possible - a 12% buyer's premium is payable in addition to the hammer price. At present AP saleroom is not required to register for VAT thus no VAT is currently charged to the above, but this may change for future auctions. If you bid online via saleroom.com, in addition to our fees, 4.95% + VAT is payable, or if bidding online via apsaleroom.com the additional fee is less, being 3% + VAT.

Before bidding buyers need to complete our Register to Bid Form with photographic identification using a current driving licence or passport. International bidders may require additional documentation. Telephone and commission bids can be arranged by agreement with AP saleroom. Any bid disputes that might arise will be dealt with promptly and the AP saleroom decision must be final. Bidding at an auction forms a legal contract between the seller, the buyer, and AP saleroom, and in some cases the seller may choose to set a minimum reserve price for an item.

For all successful bids, payment is due in full at the end of the auction, and to ensure the payment process is quick and efficient AP saleroom would prefer that all payments are made by bank transfer, although cash can be accepted with some prior notice.

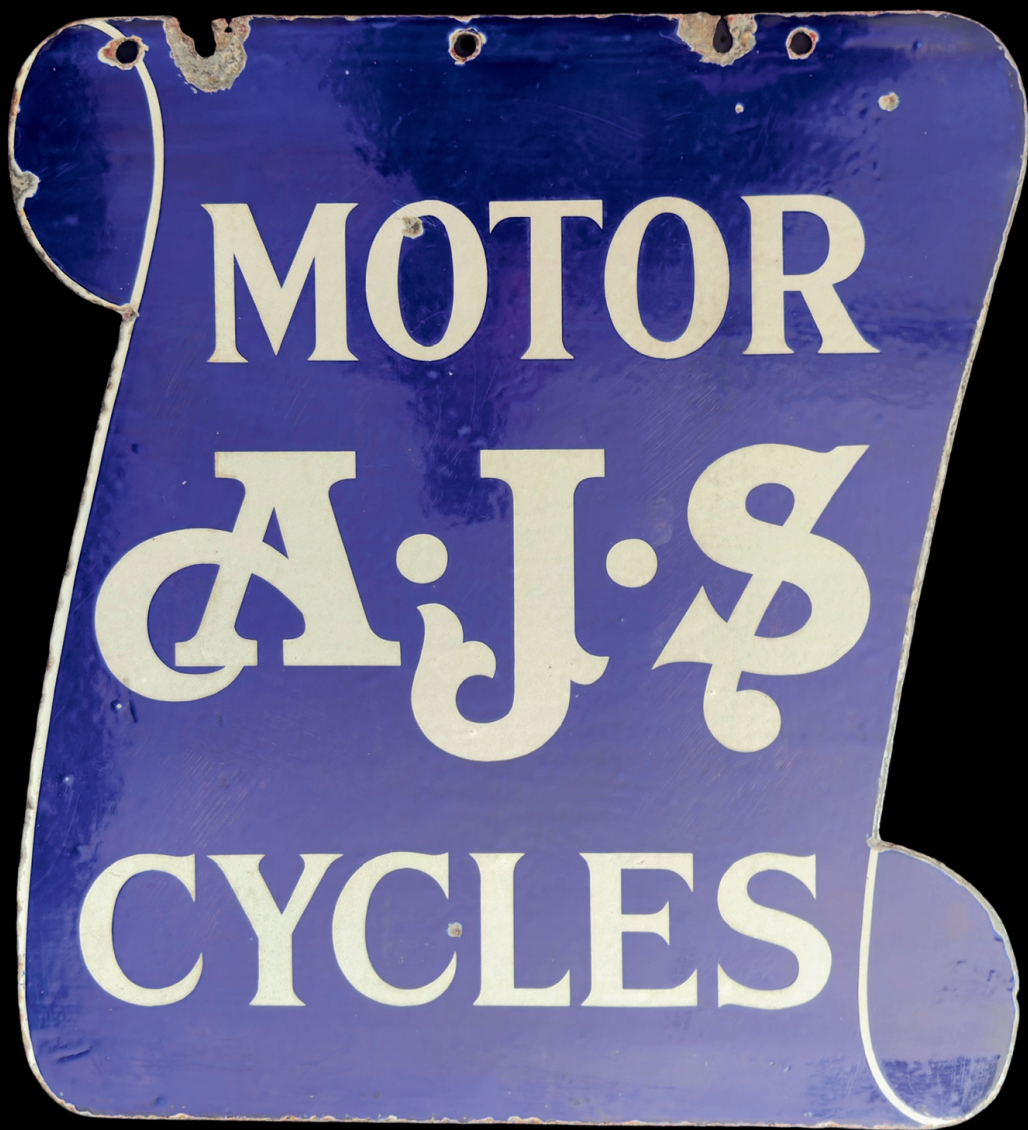
Bank Account details are as follows:

The Advertising and Petroliana saleroom Ltd: Sort code: 23-01-20 Account 31078388

Collection of lots as soon as possible after completing payment is appreciated but complimentary storage for up to 7 days is offered. Due to space restrictions longer-term requirements will have to be transferred to a separate 3rd party facility at the going rate and under separate T & Cs. In any event, the item(s) must be paid for at the end of the auction. Uncollected lots, without storage arrangements agreed, will attract additional costs, and items may be resold to cover these fees.

Full and detailed Terms and Conditions are available on our website at apsaleroom.com.

Over the years we aim to build a relationship of trust with our customers whether selling or buying. Our service will be professional and personal. We will be easy to contact and always try to accommodate our customers' specific needs. Our aim is that our shared passion with historic advertising and petroliana will create a lasting and worthwhile relationship for all concerned.



Lot 113



AP saleroom is a family-run auction focused specifically on advertising and petroliana; our aim is to collate collections of high quality and rare items and make them available in an environment geared towards providing a positive and enjoyable experience for all concerned with this fascinating hobby.

Having bought and sold at auctions for over 30 years we often felt that things could be done better – better environment, better information, lower buyer's premiums and seller's commissions – all leading towards higher prices achieved, and a greater level of satisfaction from sellers and buyers alike. This is perhaps best demonstrated by our Buyers Premium of 12%, compared with up to 30% charged by some of the other general auctioneers.

We are fortunate to have the help and support of friends in the hobby to ensure expert advice is available across the full spectrum of advertising niches - helping sellers appreciate the value of their consignments and delivering high quality information to prospective buyers.

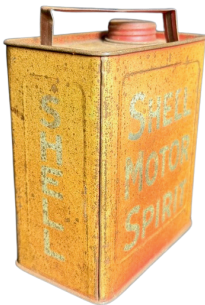
Our service will extend beyond the auction itself to the handling, collection and safe transportation of your items. We will also create an environment that connects specialist services like restoration, framing and specialist transportation to those seeking a bit extra.



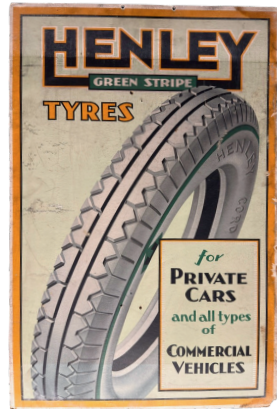
1. Double Sided Castrol Wakefield Motor Oil Enamel Sign for Wakefield Castrol Motor Oil with yellow circle on red background. Dates from the early 20th century. (51cm W x 30cm H)



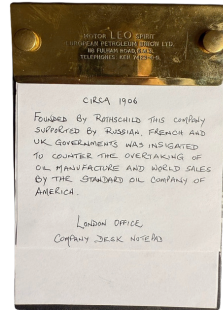
2. Double Sided Pratt's Enamel Sign: Flanged enamel sign featuring bold PRATT'S shadow lettering on a bright yellow background, marked Franco Signs. Dated 1922 (92cm x 61cm W)



3. Shell motor spirit pedal car can (10cm W x 13cm H x 6cm D)



4. Henley Tyres showcard: An early 20th century showcard advertising tyres for private cars and all types of commercial vehicles (50cm W x 77cm H)



5. Advertising desk notepad for Leo Motor spirit: rare trade gift from the Leo Motor Spirit brand (13cm W x 19cm H)



6. Shell pourer: a pint pourer in Shell's yellow and red scheme from early 20th century (pint)



7. A trio of vintage Esso paper maps, each with a printed card border for framing. Includes Plan of Scotland (30cm x 39cm), Plan of the West Country (46cm x 29 cm), and Plan of the Eastern Counties and Midlands (43 x 30 cm).



12. "Cars Stop Here By Request" enamel sign: Deep green & cream coloured enamel signage used in conjunction with trams.



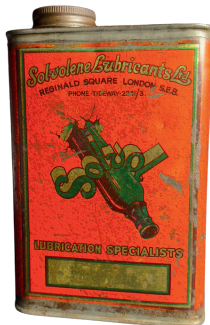
8. Blue BP Motor Spirit Enamel Sign: Double sided, flanged enamel sign advertising BP Motor Spirit, featuring early BP branding from the 1920s. (61cm W x 38cm H)



13. Castrol Anti-Freeze Pourer : Mid-20th-century Castrol anti-freeze pourer with original label. Features bold Castrol branding and "WARNING DO NOT USE OIL IN THIS MEASURE." (1 pint)



9. Chemico Flushing Oil tin: Early 1930's quart tin (quart)



10. Solvolene Lubricants oil tin: (Quart)



11. Duckhams Gear oil quart tin: for Austin and Ford (Quart)



14. National Benzole Mixture enamel sign:
vibrant yellow and black 1930's enamel
(107cm W x 61cm H)



18. Redline-Glico Oil Pouter: Redline-Glico oil pouter, featuring the distinctive yellow and red "REDLINE-GLICO LIMITED" branding, 1930s (1 pint)



15. Trio of Dunlop tube repair tins: 3 Dunlop tyre repair tins with some contents inside (Various)



19. Double sided Morris Retail Dealer Enamel Sign: Double-sided circular enamel sign for Morris Motors dealers, featuring the Oxford ox emblem in blue, red, and white. (72cm D)



16. PCL 'Rotair 60' Air Tower :
(26cm W x 26cm D x 118 cm H)



17. Racing Mercedes Hub Cap: Mercedes Racing Hubcap on a wooden plaque inscribed EIFELRENNEN NURBURGRING (15 cm W x 19 cm H)



20. An Aeroshell quart oil tin (Quart)



21. Crown Petrol Globe :
Made by Webbs Crystal
Glass Co London



23. Pair of Flame Glass Lantern Globes:
Attractive and early glass globes in
excellent condition. (25cm H x 10cm neck)



24. Ford Winged Enamel Sign : A double-sided die-
cut Ford sign from 1930's in white out of cobalt
(76cm W x 30cm H)



22. Cords Piston Rings Enamel Sign:
An unusual double-sided enamel sign
with rich colouring and interesting
subject matter (51cm Diameter)



25. Raleigh Bicycle Enamel Sign : Made By Sells
LTD London (122 cm W x 92 cm H)



26. Matchbox & Sleeves Collection: Three
attractive period pieces featuring Olympia
exhibition, Singer cars, and Motorbus card
matchbox.



27. Hillman Cars Double Sided Enamel Sign: Double sided enamel sign for Hillman cars, featuring the shield and winged logo, "Franco Signs, W.I." maker's mark. (71cm W x 38cm H)



31. Englebert tyres lithograph sign: shelf strip from 1930's (49cm W x 7cm H)



32. Shell Motor Oil Pourer: Shell Motor Oil pourer, likely from the 1920s-30s, featuring the iconic red and yellow branding (1



28. Prices Motor Lubricants Quart tin: early example dating to 1930's (Quart)



30. Shell Red Petrol Pump Globe-repro: Brilliant reproduction in glass, made to a high quality. A very close match to the original (44cm W x 44cm H x 18cm D)



33. Wakefield Everyman Cycle Oil Tin : (8 cm W x 13 cm H)



29. Oldham battery banner with a picture of battery: (181cm W x 65cm H)



34. Cleveland Red Flash enamel sign: very rare 1930's sign, made by Patent Enamel (122cm W x 77cm H)



35. Castrol quart & pint oil bottles



37. Sun Electronic Engine Tune-Up Enamel Sign: Enamel cabinet panel advertising Sun Electric engine diagnostic equipment with the stylised sun service equipment logo on both top corners. (98cm W x 56cm H)



36. Villiers Approved Service acrylic advertising sign: (91cm W x 49cm H)



38. National Benzole Company Thylene Pouter (Pint)

39. Early 20th century Shell filling station refill lighter dispenser in the shape of an early petrol pump (15cm W x 50cm H x 15cm D)



42. ROP ZIP Oil Can – One Quart: A one-quart oil can from ROP (Russian Oil Products), featuring the ZIP branding. (1 quart)



40. National Benzole Petrol pump globe: a nice example removed from a garage in Ramsgate (56cm W x 22cm D x 49cm H)



43. Vauxhall Cars Enamel Sign: A Vauxhall Cars enamel sign featuring the iconic griffin emblem and “Vauxhall CARS” lettering, likely dating from the 1950s. (30cm W x 40cm H)



41. John Bull “The Long Service Tyre” Enamel Sign: A vibrant, convex enamel sign featuring the John Bull figure with Union Jack waistcoat and bold “The Long Service Tyre” slogan. (92cm W x 31cm W)



44. Shell Ashtray: A solid brass Shell promotional ashtray (8cm W x 9cm H)



45. Citex Motor Oil Can: A quart oil can, produced by Citex Service Oil Co. Ltd. Mid century still full with contents (9cm D)



47. Shell Motor Spirit & Oils Enamel Sign: A vibrantly coloured double-sided triangular sign, made by: Bruton, London, featuring the historic "Motor Spirit & Oils" scallop branding. (74cm W x 65cm H)



48. Pratts Commercial Guaranteed Petrol Sign: Pratts Commercial Guaranteed sign, from the early 20th century, produced by the Anglo-American Oil Co., UK. (36cm D)

46. BP Motor Spirit enamel: BP's iconic Union Jack statement sign from 1930's (137cm W x 91cm H)





49. Pratt's Motor Spirit Enamel Sign: Large Enamel sign advertising Pratt's Motor Spirit, marked Protector Eccles 322. Dated 1922 (132cm W x 46cm H)



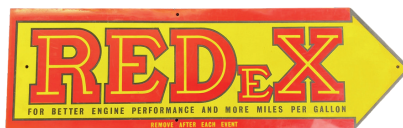
50. Imperial check measure 5 gallon can: Used by weights and measures to check the accuracy of petrol delivery. Solid copper and brass banding. (5 gallon)



51 An RAC enamel advertising sign A double-sided enamel advertising sign, likely early 20th century (57cm W x 57cm H)



52 A White Super Shell Petrol Globe Stunning example of this very rare, highly desirable globe made by Hailware. Super Shell was usually advertised on blue glass but very few examples featured white glass (46cm W x 45cm H x 18cm D)

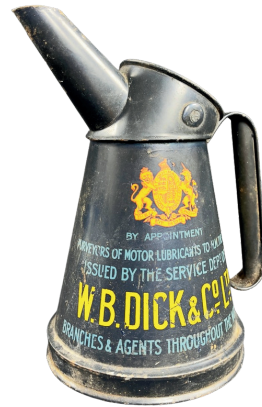


53. Redex Fuel Additive Sign: Plastic Redex "For Better Engine Performance and More Miles per Gallon" with instructions to "Remove After Each Event". (39cm W x 12cm H)



54. Shell Garage enamel: 1930's Art Deco sign - an interesting, perhaps experimental, alternative to Shell's regular design (122cm W x 122cm H)

55. Exide garage display unit: comprising of 4 round tiers (23cm D x 58cm H)



58. W.B.Dick Quart oil pourer : A Rare Oil pourer from W. B. Dick & Co Ltd, featuring the Royal Warrant, & ILO brand 'the hallmark of perfect lubrication'. (Quart)



56. Double Sided Pratt's Perfection Motor Spirit Enamel Sign: A vibrant double sided, flanged enamel sign for Pratt's Perfection Motor Spirit by Franco Signs. Dated 1922 (54cm W x 46cm H)

Fit and Forget KLG Sparking Plugs

59. KLG Plugs shelf strip: Fit and Forget' messaging (39cm W x 4cm H)

57. Carburol Aromatic Upper Cylinder Lubricant Oil Dispenser with Can: Dated 1986 (30cm W x 62cm H x 30cm D)



60. Redline Motor Spirit Enamel Sign: A fabulous bright, early 20th century enamel for Redline Motor Spirit made by Imperial Enamel Birmm (122cm W x 108 cm H)



61. Pair of Shell Clamshell:
1950's cast aluminium Shell
clamshells connectable with 3
bolts (25cm W x 26cm H)



64. Cleveland Discoll The Alcohol Blend
Petrol Pump Globe : Intricate, dramatic
shape from the series of cleveland globes.
(66 W x 42cm H x 18cm D)



62. Speedwell Motor Oil
Pint Pouter: An early
20th century metal pint
pouter for Speedwell
Motor Oil. (1 pint)



65. Motor Spirit Store Enamel Safety Sign: Enamel
sign warning that Motor Spirit is highly flammable,
prohibiting smoking, matches, or naked lights.
Marked By Order Protecto Cles 5/30. (61cm W x
46cm W)



63. India Tyres Enamel Sign: A vibrant, orange enamel sign for India Tyres with the
slogan "The Finest Tyres Made." (169 cm W x 31 cm H)

66. C.W.S. "Cascade" Motor Oil Can: Small Can of Cascade motor lubricating oil from the Co-operative Wholesale Society (CWS), made at their Irlam works near Manchester, 1930s marked "3 MC"



69. Redline Guaranteed Petrol Globe: Iconic castellated art deco petrol pump globe with a vary dramatic shape and design. (40cm W x 50cm H x 23cm D)



67. Double-sided enamel sign For East Midland Booking & Parcel Agency: A double-sided hanging Enamel sign featuring a mid-century bus in an attractive combination of colours (57cm W x 42cm H)



70. Wakefield Castrol Grease Showcard: A blue showcard inscribed "Wakefield Castrol Motor Grease For Cups and Hubs." (37cm W x 49cm H)



68. Castrol Service alloy sign in 2 parts: 2-piece garage sign from 1970's, 124cm Wide x 81cm H when joined (81cm W x 62cm H)



71. Bundle of Tyre & Car Polish Tins (Lot of Six):



74. Pair of original postcards advertising Pratt's Motor Spirit, and Palmer tyres : 1920's and unused (14cm W x 9cm H)

72 A Shell Showcard
 Superb classic showcard from Shell, sadly cut down, but still a rare and vibrant piece.
 (31cm W x 47cm H)



75. Super Fina Petrol pump globe:
 Interesting design and shape with bright blue and red colouring.
 (46cm W x 47cm H x 20cm D)



73. NOT FOR RESALE Petrol pump globe:
 A 'New Old Stock' item never fitted to a pump. (50cm W x 18cm D x 39cm H)



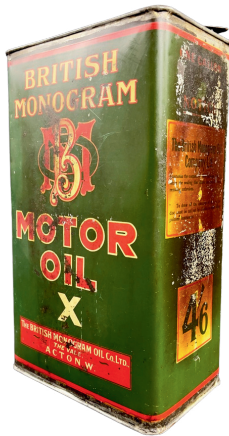
76. Edwardian Patchquick Motor Tyre Repair Kit Tin
 (16.5cm W x 11.5 cm H)



77. Johnson & Smith Motor Engineers Plaque:
Pre-war brass advertising plaque (26cm W x 13cm H)



80. Shell Motor Oil Double-Sided Enamel Sign : Highly desirable die-cut double-sided enamel sign featuring Shell's iconic black oil can. This is the more sought-after earlier version with fine detailed shading on the top, shaped as an oil can with bold red and yellow branding. (40cm W x 51cm H)



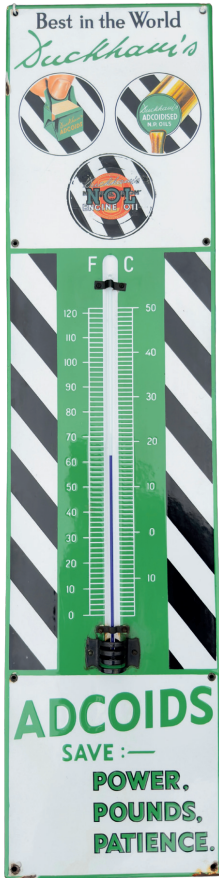
78. British Monogram Motor Oil X One Gallon can: Highly desirable British Monogram Motor Oil X gallon can, produced by The British Monogram Oil Co. Ltd., Vale, Acton, London. Featuring classic early 20th-century design and typography (1 gallon)



81. Castrol pint and a BP pint oil bottle: (1 pint each)



79. Oldham battery banner: (220cm W x 74cm H)



82. Duckhams Adcoids enamel thermometer: Best in the World' Duckhams Adcoids advertising thermometer (28cm W x 144cm H)



84. Broomwade British Made enamel sign featuring the Union Jack flag: (92cm W x 6cm H)



85. Rudge cycles enamel sign: Enamel sign in vibrant colours featuring the Rudge cartoon man as well as the red hand within a wheel design. (46cm W x 61cm H)

83. Gargoyle Mobiloil "C" for Gears Quart Can: A classic Mobiloil "C" gear oil bottle by Vacuum Oil Company Ltd, marked with the Gargoyle emblem. (1 quart)



86. Regent Supreme Petrol Globe : Dated March 1960



87. Castrol Aluminium Sign: Castrol aluminium enamel advertising sign featuring bold red "CASTROL" lettering, the slogan "THE MASTERPIECE IN OILS" in green, and the classic circular Castrol logo. (58cm x 28cm H)



90. Sun Insurance enamel sign: early 1930's pictorial featuring the 'drive with the sun' slogan (51cm W x 76cm H)



88. Red Motor B.P. Spirit Double-Sided Enamel Sign: Double-sided, flanged enamel sign for Motor B.P. Spirit, marked Bruton, Palmers Green. An early 1920's sign with a bold shadowed letter design. (61cm x 38cm)



91. Hillman Super Minx Wooden Sign : Wooden sign advertising the New Hillman Super Minx, highlighting High Quality and Big Value. C1960s. (79cm W x 67cm H)

89. Romac Non-Freezing Mixture Quart Can: Romac Non-Freezing Mixture can for vehicle radiators, produced by Motors Accessories Ltd, London, England. Likely dating from the mid-20th century (1 quart)



92. Pair of Royal Snowdrift Oil Pours: (Pint and Quart)



93. Dunlop air meter: An early, pre war dunlop wall mounted air meter. (23cm W x 28cm H x 13cm D)



96. Vauxhall Velox Tin Sign on a wooden frame featuring dealer Agents Wincanton Garages Ltd. Likely dates from the 1950s. (99 cm W x 73 cm H)



94. Duckhams Q thermometer sign: Vibrantly coloured motor oil advertising thermometer (66cm W x 51cm H)



97. Price's Motorine Oil Quart can: Partially full Motorine Motor Oil can (9cm W x 23cm H)



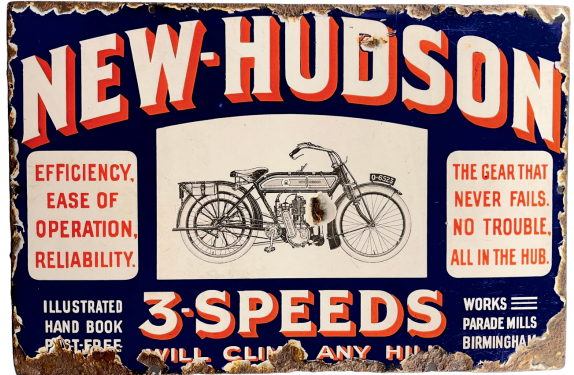
95. Pratt's flanged enamel sign: Classic 1930's art deco design double-sided flanged enamel sign (56cm W x 46cm H)



98. Castrol quart & pint oil bottle



99. Early National Benzole Company
Thylene Oil Pouter (Pint)



102. New Hudson 3-Speeds Enamel Sign –
c.1912 Motorcycle Advertising: Rare early
20th-century enamel sign for New Hudson
motorcycles featuring the slogan “NEW-
HUDSON 3-SPEEDS – The Gear That Never
Fails,” detailed motorcycle illustration.
(46cm W x 30cm H)



100. Double-sided, flanged enamel sign
advertising Royal Standard Paraffin, with
bold blue lettering on black and white
background.(46cm X 30cm H)



103. Shell red petrol pump globe: classic 70's
shell petrol globe, with strong colours. (44cm W
x 44cm H x 18cm D)



101. Dagenite plastic banner: (280cm W x 53cm H)



104. Double sided BP White May Enamel Sign: Double-sided, flanged Enamel sign advertising White May featuring the BP logo. (46cm X 31cm H)



107. AA enamel advertising sign: Early 20th century AA garage double-sided enamel sign by Franco S.W.1 (45cm D)



105. Sternal Motor Oils & Greases Double-Sided Enamel Sign: A rare and highly desirable double-sided flanged enamel sign for Sternal Motor Oils & Greases, dating from the 1930s, by Wildman & Meguyer B'ham. (38cm W x 30cm H)



108. Speedwell Lubricant Oil Dispenser: Speedwell Aiditol treatment dispenser for one gallon @ 1 1/2 d per shot (10cm W x 40cm H)



106. Redstar 2 gallon can: a rare Redstar 2 gallon can with original brass lid (2 gallon)



109. BP Super Petrol Globe : Dated July 1956



110. A pair of BP oil bottles (pint)



113. Rare shaped double-sided enamel sign for A.J.S.: A sought-after, early double-sided enamel sign advertising A.J.S Motorcycles in fabulous cobalt blue and white in the shape of a scroll (46cm W x 51cm H)

111. Plastic Display Model of a Champion Spark Plug: In-store display item for Champion Spark Plugs by Invicta Plastics (12cm W x 46cm H)



114. Pratt's miniature can: Miniature 2 gallon can, an early 1930's trade gift (5cm W x 6cm H x 3cm D)



112. Large Pratts enamel sign: from 1930's, made by Imperial Enamel Co B'ham (184cm W x 91cm H)



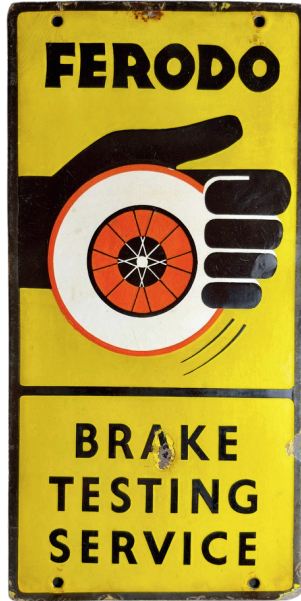
115. Redex Oil dispenser:
A Redex Forecourt Oil dispenser (30cm D x 61cm H)



116. White May and Royal Standard BP Lamp Oils Double Sided Flanged Enamel Sign : Double-sided enamel sign for White May & Royal Standard BP lamp oils from early 20th century



117. Michelin man figurine: original novelty gift item from 1970's (20cm W x 30cm H)



118. Ferodo double-sided enamel sign: Ferodo double-sided enamel sign featuring the protective hand around a wheel design, (30cm W x 61cm H)



119. BP Super Plus Petrol Globe : Dated July 1956



120. Morola Oil Pouter : Extremely Rare (Quart)



121. Superior cycles lubricating oil: (8cm W x 12cm H)



122. Huntley & Palmers biscuit tin: H & P biscuit tin featuring motoring scenes from 1920's (18cm W x 7cm H x 11cm D)



126. The Autocar' map set: with advertising from Shell featuring Stick-man from 1930's (23cm W x 27cm H)



123. BP Motor Spirit Flanged Enamel Sign: BP's patriotic statement sign from the 1930's (61cm W x 46cm H)



127. Esso Blue Illuminated Sign: An illuminated Esso Blue sign featuring the Drop-Man mascot and "ESSO BLUE PARAFFIN ON SALE HERE" slogan. Likely from the 1950s-70s (26cm W x 30cm H x 12cm D)



124. Aeroshell can: Aeroshell lubricating oil motoring tin can (10cm W x 20cm H x 10 D)

125. Pratt's Motor Spirit Enamel Sign: A very early pratts motor spirit sign by imperial enamel co LTD B'ham. (122cm W x 46cm H)





128. Enamel Sign for K.L.G. : Brightly Coloured enamel for Sparking Plugs 'Too Good to Miss' (35cm W x 51cm H)



131. Hercules lightbox in a rectangular metal case with "Hercules – The Finest Bicycle Built Today" in illuminated lettering. 55 x 24x 27 cm. (55cm W x 24cm H x 27cm D)



129. National Benzole Company Pourer : (Quart)



132. Trio of embossed metal Petroliana ashtrays: Brass BP Motor Spirit and Copper Daimler and Pratt's ashtrays believed to date to 1920's all with hanging mounts (13cm D, 2 x 12 cm D)



130. Motor Coke enamel sign: A very early 1900's double sided flanged enamel sign advertising Motor Coke for steam powered motor vehicles. Exceptionally rare item from the pioneering stage in the development of the motor car. (38cm W x 27cm H)



133. Shellmex Petrol Pump Globe: Classic shellmex, squared, early petrol pump globe (34cm W x 46cm H x 24cm D)



134. Romac Pyramid Shaped Oil Tin: Produced by Romac Motor Accessories LTD (Quart)



137 AC Fire Ring Spark Plugs Lighted Wall Clock: AC Fire Ring Spark Plugs lighted wall clock. Made from embossed plastic with a lighted display. C1950s-60s (42cm W x 15cm D)



135. Dunlop bicycle repair kit display cabinet: Display cabinet dispenser for Dunlop bicycle repair kits (12cm W x 23cm H x 12cm D)



138. Stock Kempshall Tyres' enamel sign: Believed to be the only known example, this Edwardian double-sided, flanged die-cut enamel sign features an image of the cross-section of a tyre in the stunning colour scheme of grey, white navy-blue and yellow. Made by Patent Enamel Co Ltd B'ham in the early 1900's it has stunning gloss, and is surely the most interesting item to surface for a long time in the world of Petroliana. (51cm W x 46cm H)



136. Pratts High Test Petrol & Oil Double Sided Flanged Enamel Sign : Made by Bruton, Palmers Green. Dated 1930 (56cm W x 45cm H)



139. Shell enamel flanged sign: Double-sided flanged Shell enamel sign C.1920 (61 cm W x 38cm H)



143. National Benzole Company Pourer : (Gill)

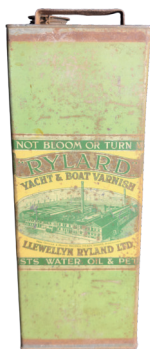


140. Lyon's tea tin with Motoring images: An early 20th century Lyons tea caddy tin featuring Victorian and Edwardian delivery vehicles (10cm W x 16cm H x 10cm D)



144. Caltex Premium Petrol Globe : Dated November 1959

141. Rylard Varnish can: A rare Rylard Boat & Yacht varnish can featuring the company's Balsall Heath factory (12cm W x 36cm H x 12cm D)



142. Dominion Enamel Sign: Vibrantly coloured 'Dominion is Here' enamel sign with yellow arrow (117 cm W x 69 cm H)





145. RAC double-sided enamel sign:
RAC 'Get you home service' mid-century enamel sign (27cm W x 26cm H)



148. Double-sided Enamel Sign for Antar oil:
A flanged, vibrantly coloured early 20th century French sign for Antar - the oil of France, made by Emall de Als, Strasbourg (55cm W x 45cm H)



146. Pictorial sign featuring Hercules swathed in a lion shawl lifting a bicycle bearing his name. Vibrant golden yellow background. Early 20th century, by Chromo Wolverhampton. (46cm W x 61cm H)



149. Junior Shell can: A good vibrant example Of a Junior Shell can (8cm W x 12cm H x 5cm D)



147. Souvenir toffee tin : A souvenir tin featuring a country picnic aside a 1920's automobile (14cm W x 5cm H x 8cm D)



150. Power Raised letter petrol pump globe: Rarer, raised letter, early power globe.

151. MG enamel sign: Mid-century octagonal enamel sign for MG motors (41cm W x 41cm H)



152. C.W.S. Cascade Motor Lubricating Oil Can: Produced by C.W.S. Ltd Soap Works, Irlam, near Manchester, this can advertises Cascade Reg Motor Lubricating Oil, No 6. (24cm x 9cm D)

153. Tin depicting various Motoring scenes (17cm W x 9cm H x 10cm D)



154. An Enamel sign for Tecalemit Official Car Valeting Station, featuring their red and white target design with blue arrow. (153 cm W x 87 cm H)



155. Goodyear flanged enamel sign: Early 20th century Goodyear flanged double-sided enamel sign featuring the 3-D effect design. (56cm W x 87cm H)



156. Shell Advertising Mirror: 1930's advertising Motor Spirit and featuring a branded petrol can and laurel (21cm W x 66cm H)



157. Esso Authorized Dealer Enamel Sign: A good vibrant Esso authorized distributor enamel sign. (91 cm W x 61 cm H)



158. Michelin Double-sided Flange sign: for Michelin Cycle tyres. (46cm W x 48cm H)

159. Smiths KLG Spark Plugs Aluminium Sign: Aluminium advertising sign for Smiths KLG Spark Plugs. (15cm W x 61cm H)



160. GNR poster : Early 20th century poster mounted on a heavy wooden frame with raised G.N.R. lettering above



161. National Benzole oil bottle crate: Interesting, sturdy oil bottle crate featuring National Benzole Company Ltd branding with the winged hat logo to front and rear. Metal crate and wooden base. (49cm W x 33cm H 33cm D)



162. Dunlop Accessories Enamel Sign: A Dunlop Accessories enamel sign, featuring the iconic Dunlop diamond logo and "ACCESSORIES" text. (30cm W x 30cm H)



165. Wooden Petroleum Spirit Crate: A wooden crate stenciled "M.P. PETROLEUM SPIRIT HIGHLY INFLAMMABLE," used for transporting fuel in the early to mid-20th Century, sturdy construction and cut out handles. (58cm W x 36cm H x 36cm D)



163 BP's iconic patriotic Union Jack sign from 1930's (61cm W x 38cm H)



166. North British Clincher Tyres Tin Sign: Tin sign promoting North British Clincher Tyres in red, white, and blue. (61cm X 40cm H)



164. Royal Enfield Bicycles Enamel Sign: Brightly coloured double-sided flanged enamel sign in cobalt and yellow featuring a cannon as the centre piece with the wording Made Like a Gun. By Wildman & Maguyet B'ham (36cm W x 43cm H)



167. Rare Silkolene Lubricants 5 Gallon Can: Rare version of Silkolene Lubricants by Dalton & Co Ltd featuring a Vulcan Jet (36cm W x 39cm H x 23cm D)

168. Duckhams Gear oil quart tin: (Quart)



169. Miller Acetylene Lamps Die Cut Showcard: Very attractive and crisp die cut showcard c1920, rare survivor in this condition. (31cm W x 23cm H)



170. Super shell blue petrol pump globe : Great example of this unusual coloured blue supershell globe (44cm W x 44cm H x 18cm D)



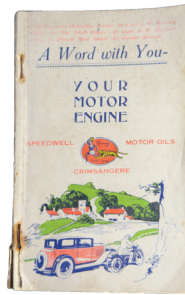
171. Firestone Tyres Enamel Sign : Features a detailed map of the UK with a slogan at the bottom saying 'most miles per shilling' (72cm W x 123cm H)



Side Front Side

172. ROP Motor Oil Pyramid can: A very rare ROP A.M.G. can featuring images of early 20th century racing cars and airplanes (15cm W x 25cm H x 15cm D)

173. Dunlop Tyres
Mirrored Glass
Finger Plate: Very
rare early mirrored
and bevelled cut
glass door push
(4cm W x 30cm H)



Front



Back



176. Speedwell Motor Oil Promotional booklet:
Early 20th century promotional Speedwell
booklet with content that includes examples of
original advertising material & cartoons and a
promotional note booklet from Standard Cars.
(10cm W x 17cm H)



174. Mobiloil Quart can: An
early 20th century Quart
can featuring the Gargoyle
Trademark device and
priced at 1'10 (9 cm W x 24
cm H)

177. Rare
Double-sided
Enamel Sign
for Morris
Service: A
desirable
Morris Service
enamel sign in
the shape of a
bullnose
radiator, made
by Angel
Super Signs
1926 Ltd
(37cm W x
63cm H)



175. BP Motor Spirit enamel sign: An early 1920's sign in an uncommon format, by
Bruton of Palmers Green (137cm W x 46cm H)

178. Bestol lubricating oil oval tin: (8cm W x 12cm H)



181. Shell Motor Oils Double-sided Cabinet top: A rare and highly desirable 1920's Double-sided tin Cabinet signage for Aeroshell 2'2 and Triple 1'11 (72cm W x 30cm H)



179. Goodyear Enamel sign: Interesting Goodyear tyres enamel featuring the famous winged sandal logo (91cm W x 49cm H)



182. Super 'Slip' Oil can: A pint can of Slip Super Penetrating Oil for the removal of rust, lubrication and cleaning (9 cm W x 13 cm H)



180. Morris Dealer enamel sign: a single-sided enamel sign featuring the Morris bull icon (73cm D)



183. Pair of Early 20th Century Cycle Oil Cans – Gargoyle & Wakefield Everyman's
Two classic lubricating oil cans by the Vacuum Oil Company and C.C. Wakefield & Co. , both c.1920s-30s, (13cm H)



184. Telephone enamel double sided sign:
Double sided You may telephone from here
enamel sign (56 cm W x 23 cm H)



185. Rileys Toffee tin with
travel related images: A large
toffee tin featuring images of
a 1920's motor car and
airplane and carriages
amongst others (15cm W x
20cm H x 15cm D)



186. 4 fl oz BP Energol can: BP
Energol Domestic Oil tin with
good vibrant colours (6cm W x
9cm H x 3cm D)



187. Exide battery advertising mirror: 1930's
promotional garage mirror (33cm Wx 55cm H)

188. Dunlop Tyres
Showcard :
Promoting Dunlop
tyres with the
slogan 'The
World's Master
Tyre' Early- mid
20th century.
Printed By J
Howitt & Son LTD,
Nottingham.
(63cm W x 93cm
H)





189. Petroleum Spirit Enamel Safety Sign: A double sided alloy sign with fixing bracket warning that Petroleum Spirit is highly flammable, with instructions of No Smoking and Switch Off Engine. (52cm W x 29 cm H)



192. Shell "In Winter & In Summer" Peep Show by Barnett Freedman – 1935: Seven-fold concertina peep show for Shell, showing winter London and summer countryside scenes, designed by Barnett Freedman and printed by Vincent Brooks, Day & Son Ltd. Dates from circa 1935. (24cm W x 15cm H)



190. Romac tin case: Romac repair outfit tin case (15cm W x 34cm H x 8cm D)



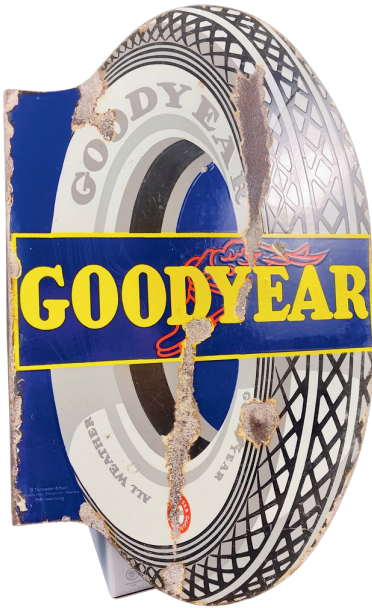
191. N.O.L Engine Oil Quart can: A Duckhams N.O.L engine oil can 'as specified by Morris, Wolseley, Riley and MG (9cm W x 23cm H)



193. BP double-sided enamel Can Rack sign: Early 1930's featuring a map of England and Wales, pin-pointing Llandarcy - the UK's first ever oil refinery, made By Franco Signs W1 and set upon a more recent can rack (57cm W x 106cm H)



194. Pratts Ethyl Petrol Enamel Sign :
(92 cm W x 92 cm H)



195. A Goodyear All Weather Tyres Double-Sided Enamel Sign – c.1930s: Double-sided flanged enamel sign in the shape of a Goodyear tyre with the brand's bright blue, yellow and red colouring. Makers mark- Torpedo- email Frankfurt (57cm W x 86cm H)



196. Pulsator Air meter:
Classic Art deco styling
1930's air meter, wall mounted.
original paintwork.
(30cm W x 58cm H x 28cm D)

197. Speedwell Motor Oil can:
A very good example of the ever-popular Speedwell Motor Oil can
(11cm W x 19cm H x 6cm D)



198. Mirror stating "Garage": Early 20th century mirror in the shape of a lozenge with intricately patterned bevelling (51cm W x 11cm H)



199. Rolls Royce showroom sign:
Pre-war bevelled edged
showroom sign with hanging
chains



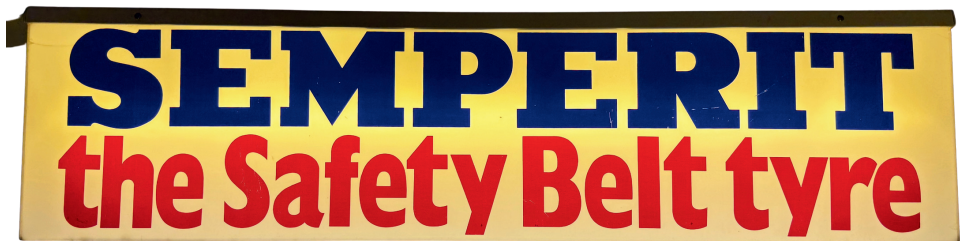
202. Nu-Texa Brake & Clutch Linings Enamel Sign:
Enamel sign for Nu-Texa Brake & Clutch Linings
featuring the black hand logo. Black and white
out of yellow colouring, naming Fuller Frictions
Ltd, Bristol (36cm W x 64cm H)



200. Redex "Premier Agency" Sign:
Aluminium sign promoting Redex
additives for sump, gearbox, rear axle,
and petrol, issued to authorized outlets.
(23cm W x 30cm H)



203. Pair of Raleigh Cycles oil tins: (8 fl oz each)



201. Advertising illuminated sign for Semperit tyres:
1970's New Old Stock double-sided garage sign (124cm W
x 31cm H x 15cm D)



204. Dunlop Stock Tyres Enamel Sign: Enamel sign featuring DUNLOP STOCK TYRES with the classic logo on a yellow background and red border. (77cm W x 29cm H)



207 A Wakefield Castrol Motor Oil Pouter
Metal pouter marked Wakefield Castrol, featuring the classic green Castrol logo and slogan "MOTOR OIL THE MASTERPIECE IN OILS." (1 pint)



205. RAC "Get You Home Service" Enamel Sign: Featuring the RAC logo and "Get You Home Service" text, indicating garages or vehicles providing roadside assistance, early to mid-20th century. (28cm W x 28cm H)



208. Mobiloil "A" Oil Gallon Can: A very well presented Gargoyle Mobiloil "A" oil can, 1 imperial gallon, made by Vacuum Oil Company Ltd., London. (14cm W x 25cm H x 14cm D)



206. Imperial check measure 4 Gallon can: Used by weights and measures to check the accuracy of petrol delivery. Solid copper and brass banding. (30cm W x 34cm D x 42cm H)



209. Shell Fill up from the Pump enamel sign: Brightly coloured garage sign from 1930's featuring the company's famous clamshell design (122cm W x 122cm H)

210. Champion spark plug: Hanging garage advertising device by Invicata Plastics (with new bracket) (13cm W x 44cm H)



214. Pratt's Motor Spirit Enamel Sign: Enamel sign featuring bold PRATT'S shadow lettering on a bright yellow background, marked Franco Signs. Dated 1922 (53cm W x 46cm H)



211. Holts Holes & Dents sign: Aluminium garage sign (35cm W x 23cm H)



212. Trio of BP Energol sales sample bottles: Unopened salesman sample bottles from 1930's (13cm H)



215. Veedol Oil Pouter: Early 20th-century Veedol one point oil pouter featuring "THE PERFECT LUBRICANT VEEDOL" slogan. (1 pint)



213. Large Michelin Tyres Enamel Sign : Made by Imperial Enamel Co (146cm W x 41cm H)



216. Shell Determination
Showcard : Made by W.G Butters



220. Shell "Stickman"
Lubricating Oil Pouter: A
classic 1930s Shell lubricating
oil pouter featuring the iconic
red "Stickman" logo on a
bright yellow can. (1 pint)



217. "Bedford" hanging Glass Sign:
Oval glass sign featuring
"Bedford" in gold lettering. (45cm
W x 30cm H)



221. Fat Shell Petrol Pump globe:
Highly desirable, classic red fat shell
globe. Much rarer than the black
one. (51cm W x 51cm H x 30cm D)

218. 7 oz Price's Oil tin:
An early 20th century
Price's Cycle
Lubricating Oil tin (8
cm W x 14 cm H)



219. Humber
Motorcycles
Enamel sign: An
early 20th
century enamel
sign with a
fabulous cobalt
and white
colour scheme
made by patent
enamel co LTD
B'ham. (127cm
W x 58cm H)





222. Esso Blue Cardboard Die-cut Sign: Double-sided card sign featuring a cartoon character and "Open for Esso Blue Paraffin" text, with one side indicating open and the other closed. Likely dates from the 1950s–1970s. (18cm W x 33cm H)



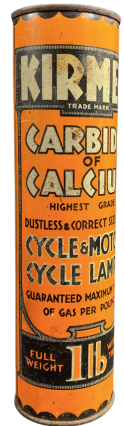
226. Mackintosh's tin featuring various Motoring scenes: (17cm W x 8cm H x 10cm D)



223. Benzoyle dispensing cabinet: Use Benzoyle' upper cylinder lubricant garage advertising dispensing cabinet (13cm W x 39cm H x 12cm D)



225. Mercedes-Benz Convex Enamel Sign: Mercedes-Benz sign featuring the iconic three-pointed star & laurel wreaths, on a vivid blue background. (60cm D)



227. 1 lb Kirmer Calcium Carbide Can: Marked Kirk & Merifield, Birmingham, (20cm H x 5cm D)



224. Rolls Royce Service sign: aluminium from 1960's (104cm W x 38cm H x 4cm D)



228. Marshall's One Gallon Oil can: A very rare Marshall's Kosmo Lubric Oil can featuring a motorcycle and a car from 1910's (16 cm W x 31 cm H x 10cm D)



229. Michelin Enamel Sign: A shield shaped enamel sign featuring the Michelin Man running alongside a rolling tyre with blue background and yellow Michelin lettering. (34cm W x 40cm H)



233. B.S.A. bicycles enamel advertising sign: Early 20th century 'We sell B.S.A. bicycles' enamel advertising sign (71cm W x 107cm H)



230. India tyres round sign: Deep down safety' round aluminium garage sign (61cm Diam x 6 cm deep)



234. ESSO Petrol pump globe: Superb bright colouring, and with it's rubber neck ring, removed from a garage in Maidenhead. (51cm W x 18cm D x 39cm H)

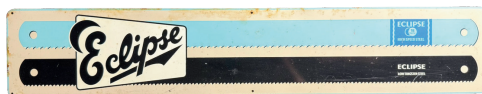


231. Excelene lubricating oil oval tin: (8cm W x 12cm H)



232. Superior Lubricating oil: lovely graphics on an early 1920's tin (8cm W x 12cm H)

235. One Gallon Morrisol Oil Can: A 1920's Black Morrisol engine oil can by Alexander Duckham & Co (16cm W x 30cm H)



238. Eclipse hacksaw blades sign: New Old Stock sign (56cm W x 10cm H)



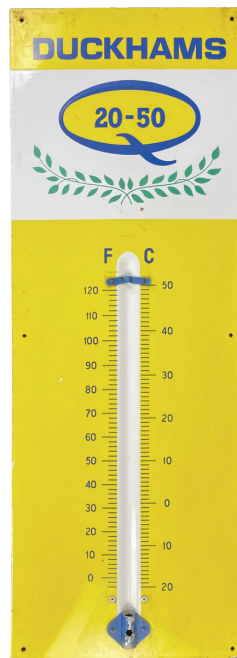
239. Carless Coalene Mixture Petrol Pump Globe - repro: A fabulous reproduction by a very talented artist to remanufacture this iconic globe of which only one is known to exist. (33cm W x 45cm H x 20cm D)

236. Institute of the Motor Trade (IMT) Enamel Sign: A shaped double sided enamel sign for The Institute of the Motor Trade (IMT), featuring I.M.T Service. (51cm W x 73cm H)



237. A varied collection of cycling memorabilia including a bicycle clock figurine, cased set of real, marked plate silver spoons with bicycle motifs, a Lowestoft cycling map, antique chain and lock and cycling badges.

240. Duckhams 20-50 Motor Oil Enamel Thermometer Sign dating from the mid-20th century. (33cm W x 92 cm H)





244. Filtrate 1lb grease tin: dating to 1930's (10cm D x 10cm H)

245. Ristol drum tin made by Henry Prichard & Co (1947) LTD 76cm W x 30cm H (38cm H x 23cm D)

241. Shell X-100 Motor Oil bottle (35cm high) and a Vizol Motor Oil bottle (28cm high).

242. Petroyle Motoring can (Pint): Petroyle upper cylinder lubrication motoring can (33cm W x 55cm H)



246. Prowodnik Columb Tyres Enamel Sign: Early 20th century enamel sign featuring Prowodnik Columb Tyres with red and white design and stylized tyre graphic. Made by Bruton of Palmers Green. (99cm W X 66cm H)

243. Dunlop Motor Tyres Enamel Sign : Big, powerful design featuring the union jack logo. (183cm W x 122cm H)





247. Art Nouveau Gladiator Cycles Ashtray: Superb pressed brass advertising ashtray in good original condition. (13cm W)



250. Power Regular Petrol pump globe: very good example, and with its rubber neck ring (56cm W x 22cm D x 49cm H)



248. Castrolite double-sided enamel sign used to display prices on the top of oil dispensing cabinets, 1930's. (20cm W x 14cm H)



251. Dunlop Accessories Cabinet Pediment: Unusual double-sided laminated wood pediment with striking Art Deco image. (45cm W x 13cm H)



252. Power Petrol Etched Pump Glass Sign: Some deterioration to the white background paint, but remains stable. (51cm W x 18cm H)

249. Pair of 1980's New Old Stock Viking Tyres signs – Approved Stockist (122cm x 61cm) and Service Centre (46cm x 61cm).





253. Dunlop stock tyres enamel sign: dating to 1930's (30cm W x 153cm H)



254. Velvone Running-in Compound Pint Can: Velvone Running-in Compound can, containing one pint for use with one gallon of engine oil. Manufactured by James White (Widnes) Ltd (1 pint)

255. Perspex Esso Clock: A late 20th century clock advertising Esso 'For Happy Motoring' in working order (41cm W x 56cm H)



256. Castrol Oil Pouring Jug: Castrol oil pouring jug, featuring green, red, and white branding. (1 Litre)

257. Shell-Mex & B.P. Ltd. Fuel Oil Agent Enamel Sign: Enamel sign reading Authorised Fuel Oil Agent for Shell-Mex and B.P. Ltd. with a flame motif. (59cm W x 43cm H)





258. Tin advertising sign for Brake Specialist services (92cm W x 27cm H)



261. Shell Enamel Sign – Yellow & Red Scallop Logo: Enamel sign featuring the iconic Shell wordmark and red-and-yellow scallop (Pecten) logo. (72cm W x 77cm H)



259. White rose oil enamel flanged sign: Early 20th century double-sided flanged sign for White Rose Oil ((56cm W x 46cm H))



262. Alpen Lubricants Sample Box : Compact sample box, or salesmen showcase containing multiple small glass vials of Alpen lubricants, produced by Dirkland Wood & Co., Ltd. in London EC 2; early 20th-century.



260. Michelin money box: original novelty gift item from 1970's (22cm W x 33cm H)



263. Wakefield Castrol Motor Oil Can: A Wakefield Castrol Motor Oil can, dating from the early 20th century. Produced by C.C. Wakefield & Co. (later Castrol Ltd.) (10cm W x 16cm H x 8cm D)

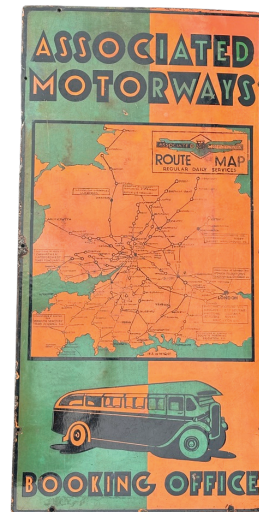
264. Coloured Flame Lantern Globe:
 Attractive and unusual coloured flame lantern globe in good condition. (18cm H x 8cm neck)



268. National Benzole Petrol pump globe: Unusually shaped 3-sided glass pump globe (37cm W x 37cm D x 43cm H)



265. Bosch Centenary Calendar: High quality large calendar showing 12 of their best vintage adverts. (48cm W x 83cm H)



269. Associated Motorways Art Deco Enamel Sign: Cheltenham firm sign from the 1930s with some edge restoration; attractive and affordable.



266. Flight Motor Spirit 2 Gallon Can : (2 Gallon)



267. Vizgol Oils Gate Sign: Small and unusual item c1930, worn but presentable condition. (19cm W x 6cm H)



270. Postwar Roadfinder Cycle Tyres Enamel Sign: Excellent condition. (61cm W x 20cm H)



271. Castrol Showcard – Malcolm Campbell's Blue Bird: Historically important advertising showcard depicting record-breaking attempt. Cropped but superb piece of automotive history. (28cm W x 41cm H)



272. Pressed Metal Matchbook Covers & Pen Knives (Set of 3): Edwardian and later items in good condition.



273. Pair of original postcards advertising Continental tyres: very early cards featuring automobiles from 1900's (14cm W x 9cm H)



274. Cleveland Discol petrol pump globe: Red/blue lettering to both sides together with a red surround and the alcohol blend in red lettering down both sides. (64cm W x 43cm H x 19cm D)

275. Autobrite tin advertising sign: promoting its silicone car polish (30cm W x 46cm H)



276. Esso Kerosene Enamel Sign: Features logo and elephant in relief, post-war. (30cm W x 61cm H)

277. bundle of Spark Plug Collectibles (Champion, AC & Badge): Rare and attractive trio including ashtray, tie pin, and lapel badge. (Various)





278. Trio of Glass Ashtrays:
Mounted in miniature rubber
tyres promoting Dunlop, Davies
and Firestone (15cm D)



279. Esso Blue Cabinet Top
Display Sign: Aluminium cabinet-
top display for Esso Blue, mid-
20th-century. (46cm W x 13cm
H)

280. Hanging
cardboard
calendar featuring
a central image of
a Hercules 'The
Finest Bicycle
Built Today' with a
selection of
months and
numbers (31cm W
x 41cm H)



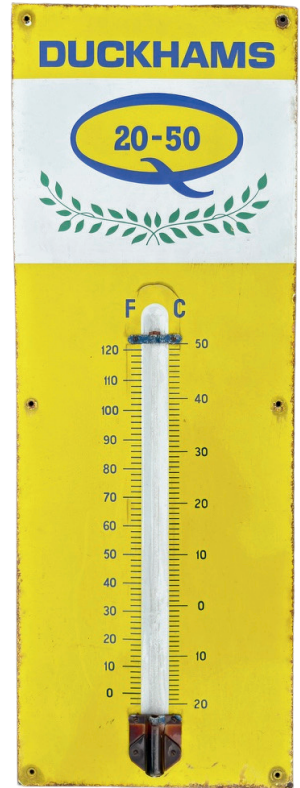
281. Cascade Motor
Lubricating Oil Can –
C.W.S. Irlam: A 1930's
Cascade Oils can
produced by the Co-
operative Wholesale
Society Soap Works in
Irlam, Manchester.



284. Dunlop
Motor Car Repair
Outfit : (24cm W x
18cm H x 5cm D)



282. 4 x Castrol Oil quart tins: (Quart)



283.
Duckhams
Enamel
Thermomet
er: (33cm W
x 92cm H)



285. London Transport Underground Enamel Sign (BIPT.30): A designated bicycle storage area LTU enamel sign with "Cycles may be stored here only at owners risk" inscribed. (33cm W x 18cm H)



286. Dagenite Batteries Advertising Showcard: An advertising showcard for Dagenite Batteries, featuring the a red logo, and the slogan "RIGHT FOR ROLLS-ROYCE - RIGHT FOR YOU TOO." (60cm W x 45cm H)



287. Castrol Motor Oil Tin Sign: Enamel sign featuring the Castrol logo with Wakefield Motor Oil (Patented) and slogan "Let Us Drain and Refill Your Sump with?". Likely dates from the mid-20th century. (61cm W x 61cm H)



289. Bundle of Grinding Paste Tins (Lot of Four)



290. Outspan Oranges Advertisement – Hillman Minx Competition: Early advertisement promoting a competition that features a Hillman Minx 4-Door Touring Sunshine Saloon as the grand prize in collaboration with Outspan Oranges. (40cm W x 25cm H (open)



291. Enamel sign stating Smoking Prohibited: Warning sign in red out of white enamel (91cm W x 30cm H)



288. Michelin large alloy sign: New Old Stock aluminium garage sign (200cm W x 50cm H)



Notes

A series of horizontal dotted lines for writing notes.



Lot 80



We launched our business at the Beaulieu Autojumble in May this year – and for me, there couldn't have been a more meaningful place to start.

Beaulieu has always been close to my dad's heart. He's been going since he was a boy in the early 70's, taken there every year by his father with a scribbled list of odd car parts to hunt for. And when he found something on the list the reward was some pocket change to put towards a sign or two. It wasn't just about finding the parts – it was about the people, the atmosphere, the stories behind the things they found. Those memories stayed with him.

And when I was a young boy I too followed my dad around the many fields come rain or shine.

So, to now be standing beside him, launching our own business built on the very same passion, feels like a full-circle moment. What started as a childhood tradition for him has become the foundation of something we're building together.

We deal in vintage advertising and automobilia – enamel signs, tins, oil cans, and pieces of history that deserve to be seen and appreciated again. Every item tells a story, just like ours.

To me, this isn't work at all. It's passion that we now share, and it's rooted in the family values we were raised on. And it all began at Beaulieu.

Edward

CREATED - FOR - COLLECTORS - OF - ADVERTISING & PETROLEUM
ASK ABOUT
CONSIGNING
STOCK WITH
US

apsaleroom.com